

✂ Cut out on the dashed line — page can then be inserted into your Knitter's Planner.

FEB

9 SUNDAY

10 MONDAY

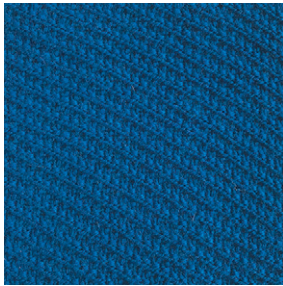
11 TUESDAY

WEEK 7

THIS WEEK'S STITCH BLOCK

diagonal knit & purl

Designed by
Janita Meriläinen
 @Willamagia



(multiple of 4 sts)

Row 1: *P2, k2; rep from * across.

Row 2: *K1, p2, k1; rep from * across.

Row 3: *K2, p2; rep from * across.

Row 4: *P1, k2, p1; rep from * across.

Rep rows 1-4 for patt.

Find the full pattern at
[KnittersPlanner.com/
 stitch-blocks](http://KnittersPlanner.com/stitch-blocks)

See the stitch blocks index
 in the Reference section.

■
■
■
6
7
8
9
10
11
12
1
2
3
4
5
6
7
8
9

■
■
■
6
7
8
9
10
11
12
1
2
3
4
5
6
7
8
9

■
■
■
6
7
8
9
10
11
12
1
2
3
4
5
6
7
8
9

personal TO-DO LIST

knitting TO-DO LIST

Blank area for personal to-do list.

Blank area for knitting to-do list.